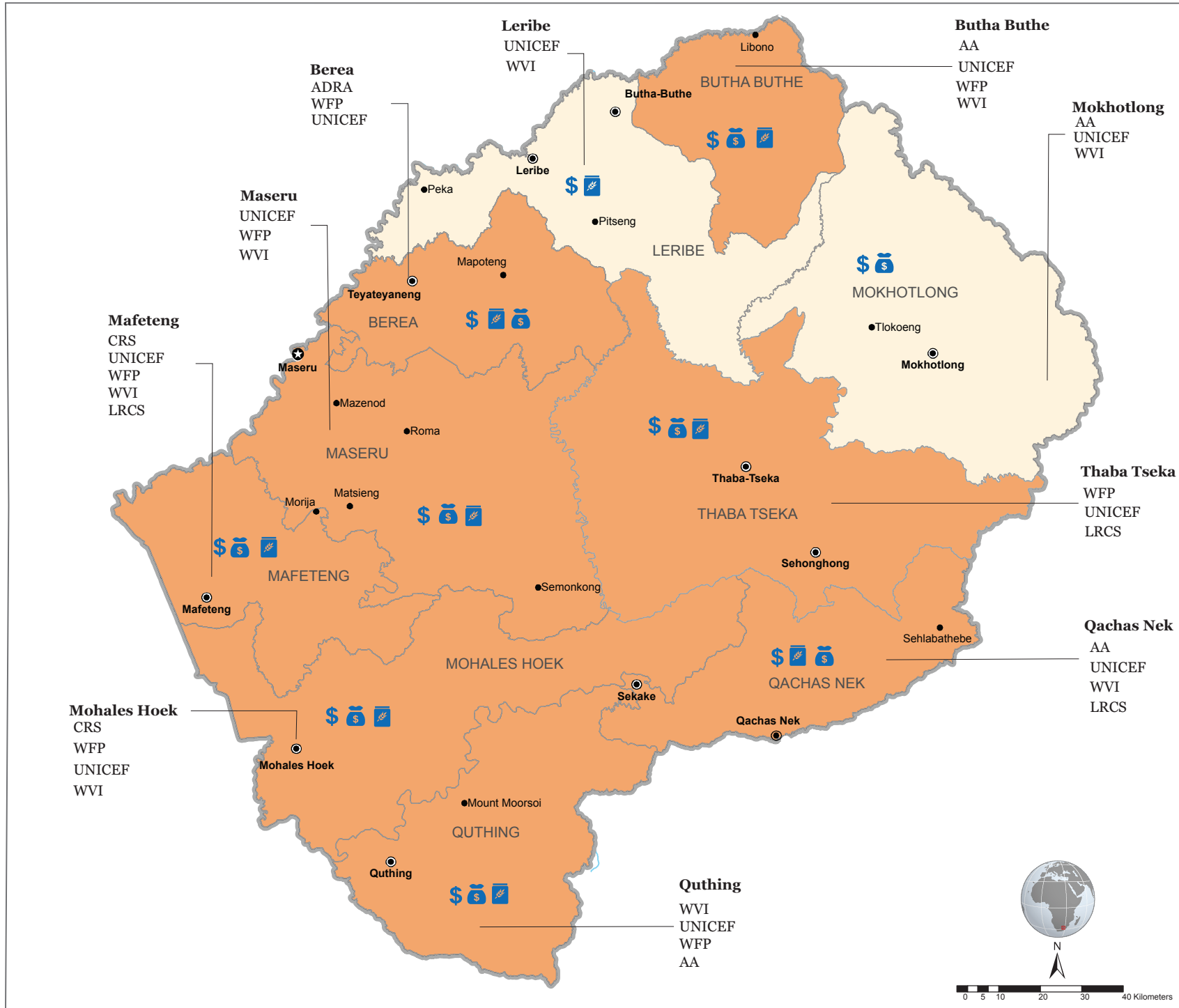


Lesotho: Programme Activities in Food Security Sector (as of 28 August 2017)

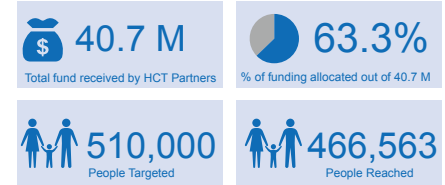


- Country capital
- District capital
- International Boundary
- District boundary
- River Fills/Lakes

Number of programme activities



Key Figures



UN Agencies / INGOs Involved

- AA** Action Aid
- ADRA** Adventist Development and Relief Agency
- CRS** Catholic Relief Services
- FAO** UN Food and Agriculture Organization
- LRCS** Lesotho Red Cross Society
- Unicef** United Nations Children's Fund
- WFP** UN World Food Programme
- WVI** World Vision International

Sectoral programme interventions

- Social protection cash top-up
- Unconditional cash assistance
- Unconditional in-kind/food assistance

Date: 28 August 2017

Sources: UN RCO Lesotho 4W, HDX Data, Humanitarian Country Team.

To send feedback & receive more humanitarian updates: <https://goo.gl/WmhAk0> or write to narayan.maharjan@one.un.org

<http://www.undp.org/content/unct/lesotho/en/home/humanitarian-efforts.html>

<https://www.humanitarianresponse.info/en/operations/lesotho>

The boundaries and names shown and the designations used on this map do not imply official endorsement or acceptance by the United Nations.