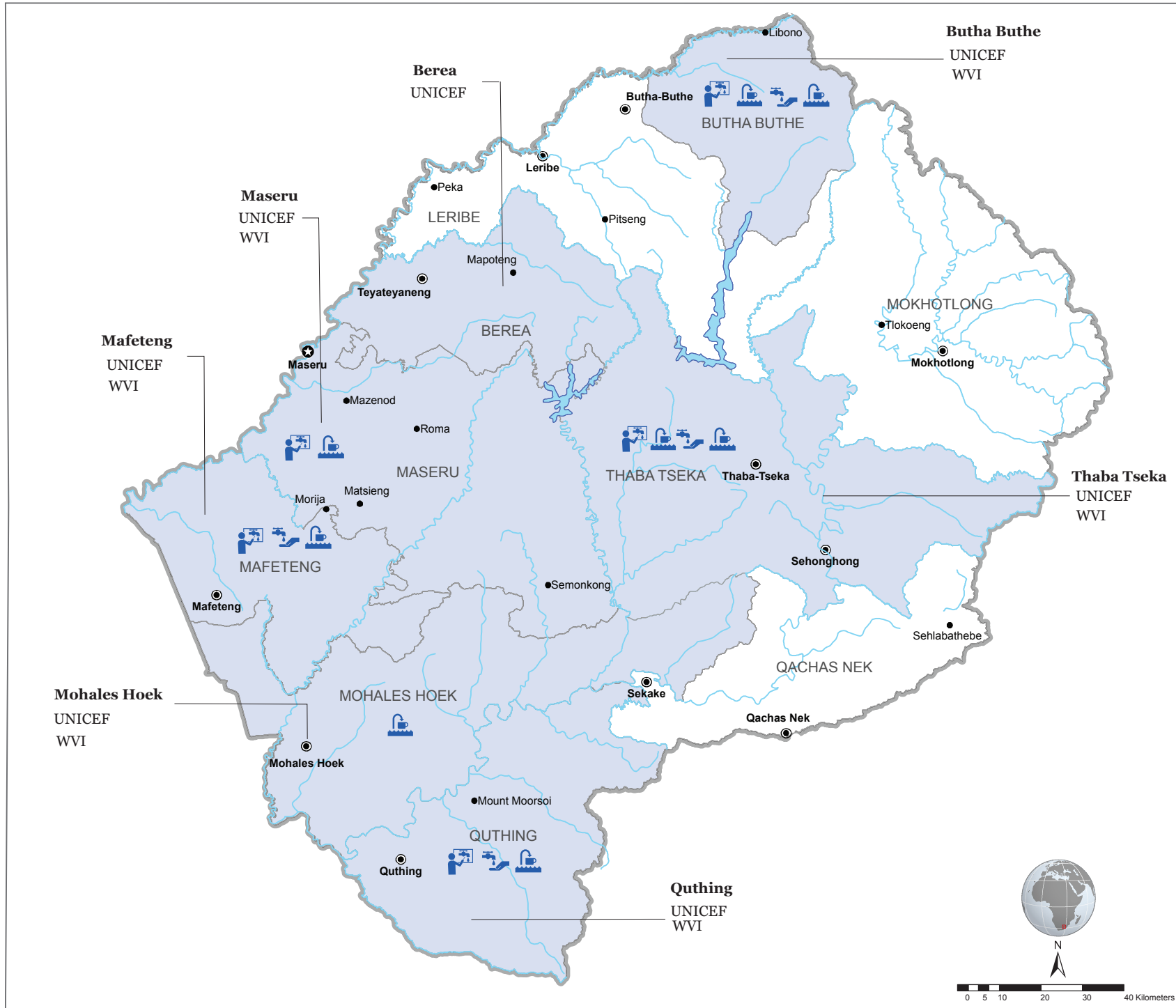


# Lesotho: DFID Joint Programme Interventions in Water, Sanitation and Hygiene (as of 31 August 2017)

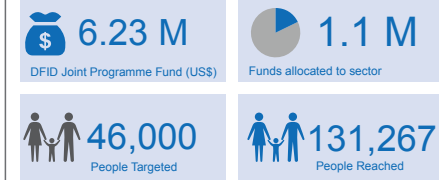


- Country capital
- District capital
- International Boundary
- District boundary
- River Fills/Lakes
- River lines

## Number of programme activities

1

## Key figures



## UN Agencies / INGOs Involved

- Unicef** United Nations Children's Fund
- WVL** World Vision Lesotho
- CRS** Catholic Relief Service

## Sectoral programme interventions

- Hygiene education
- Rehabilitation of Water Sources
- Sanitation
- Water Equipment

**Creation Date:** 31 October 2017

**Sources:** UN RCO Lesotho 4W, HDX Data, Humanitarian Country Team.

**To send feedback & receive more humanitarian updates:** <https://goo.gl/WmhAk0> or write to [narayan.maharjan@one.un.org](mailto:narayan.maharjan@one.un.org)

<http://ls.one.un.org/content/unct/lesotho/en/home/humanitarian-efforts.html>

<https://www.humanitarianresponse.info/en/operations/lesotho>

*The boundaries and names shown and the designations used on this map do not imply official endorsement or acceptance by the United Nations.*

